



SCHIECENTRALE 4B

Saeedsun.ir

Schiecentrale 4b

Saeedsun.ir

Architects: Mei Architecten

Location: Rotterdam, The Netherlands

Area: 55000.0 sqm

Year: 2008







Saeedsun.ir

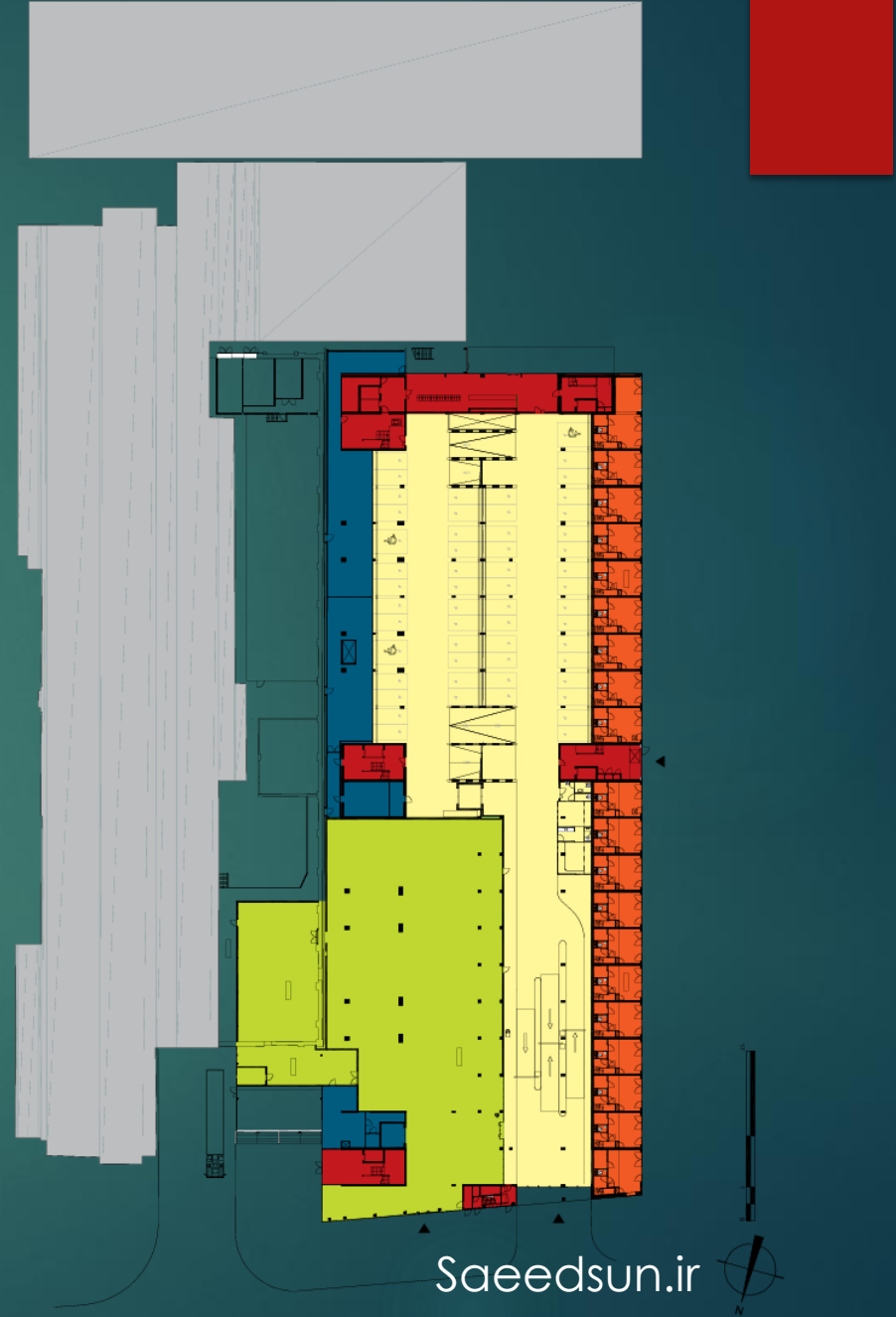
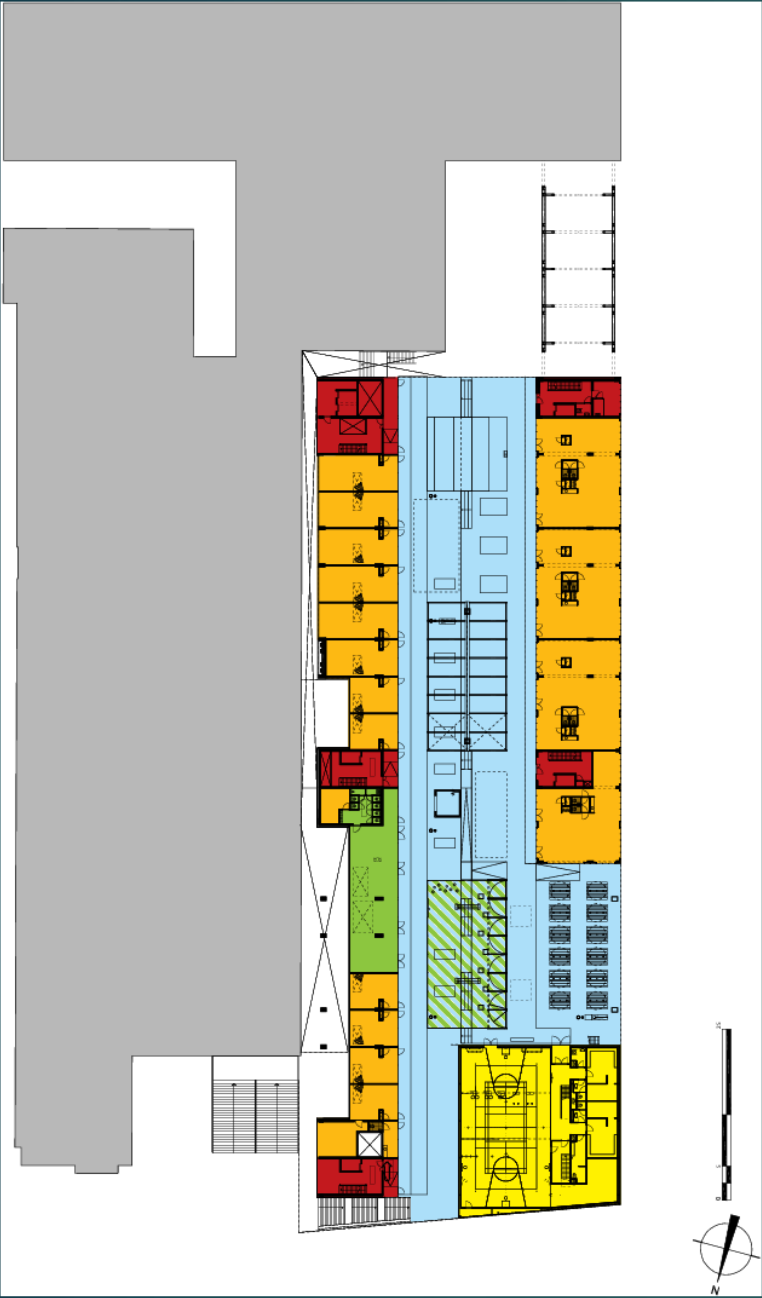


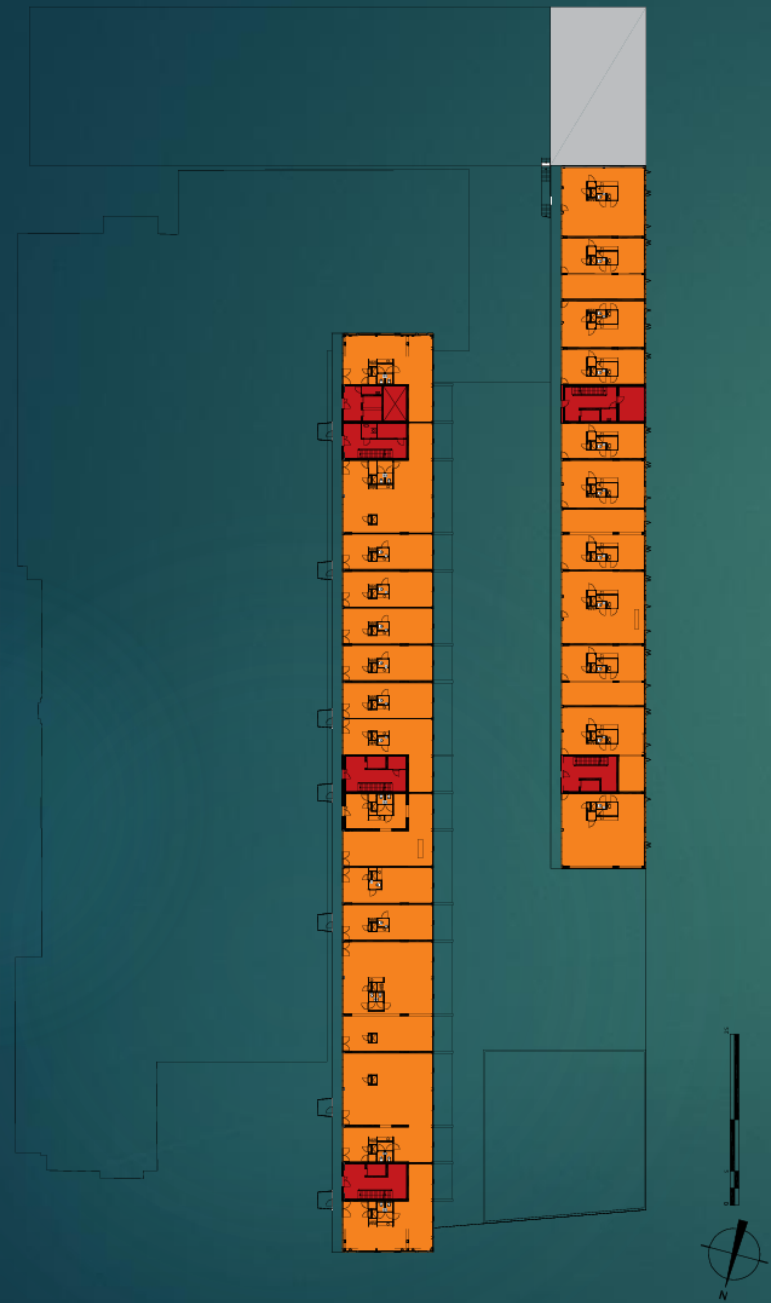
Saeedsun.ir



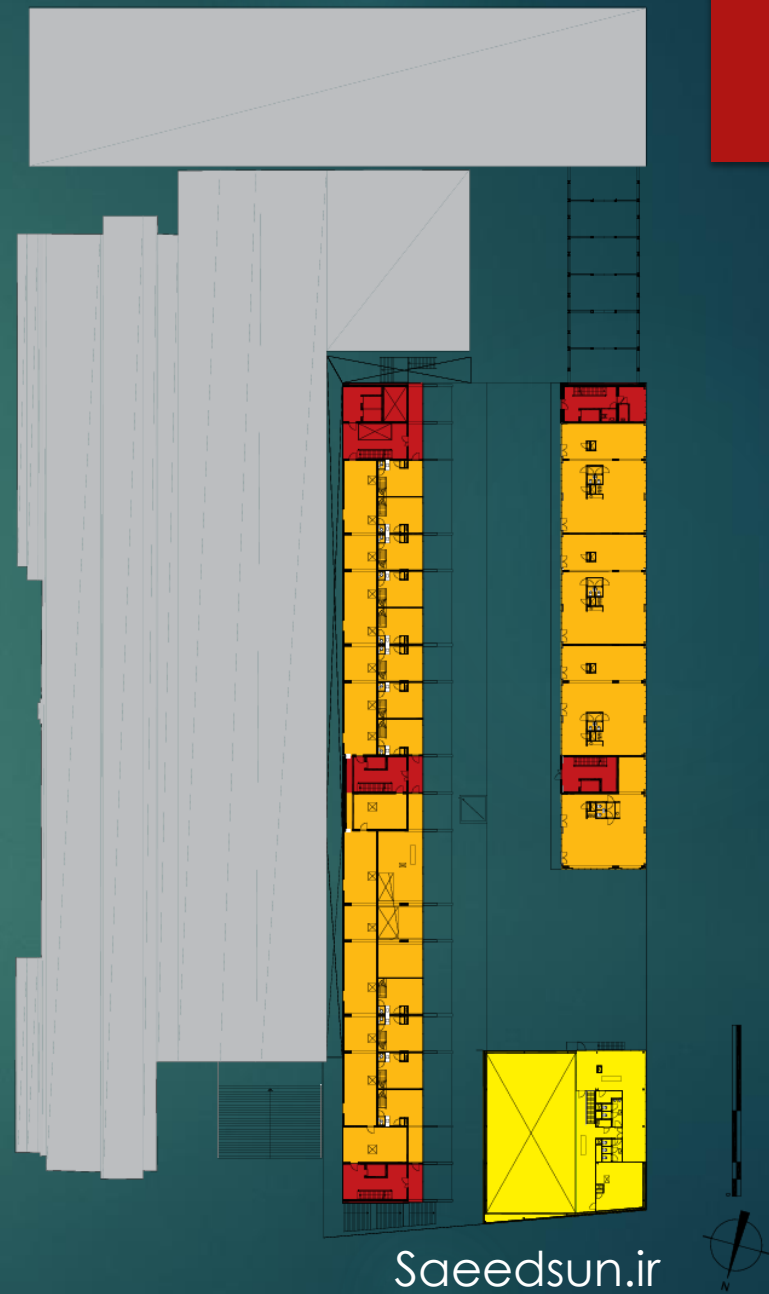


plan





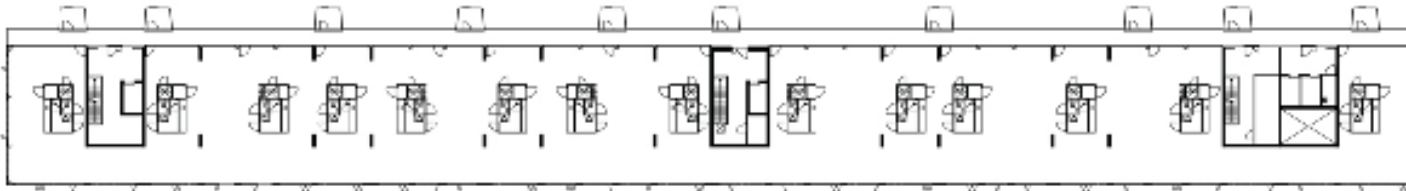
plan



framework high plate



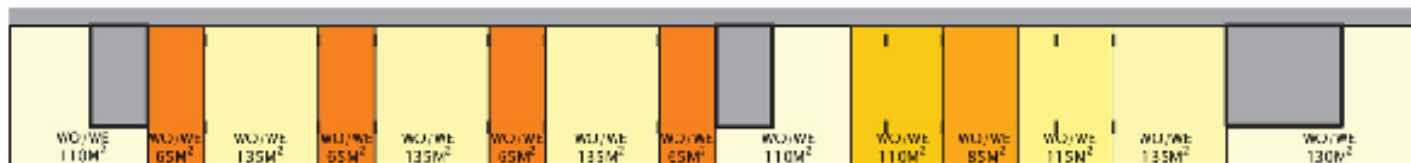
framework high plate with content



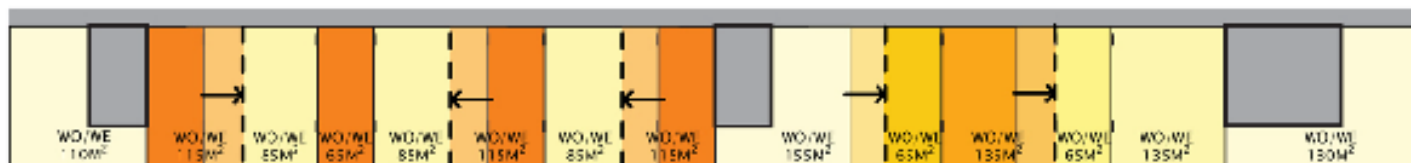
completion

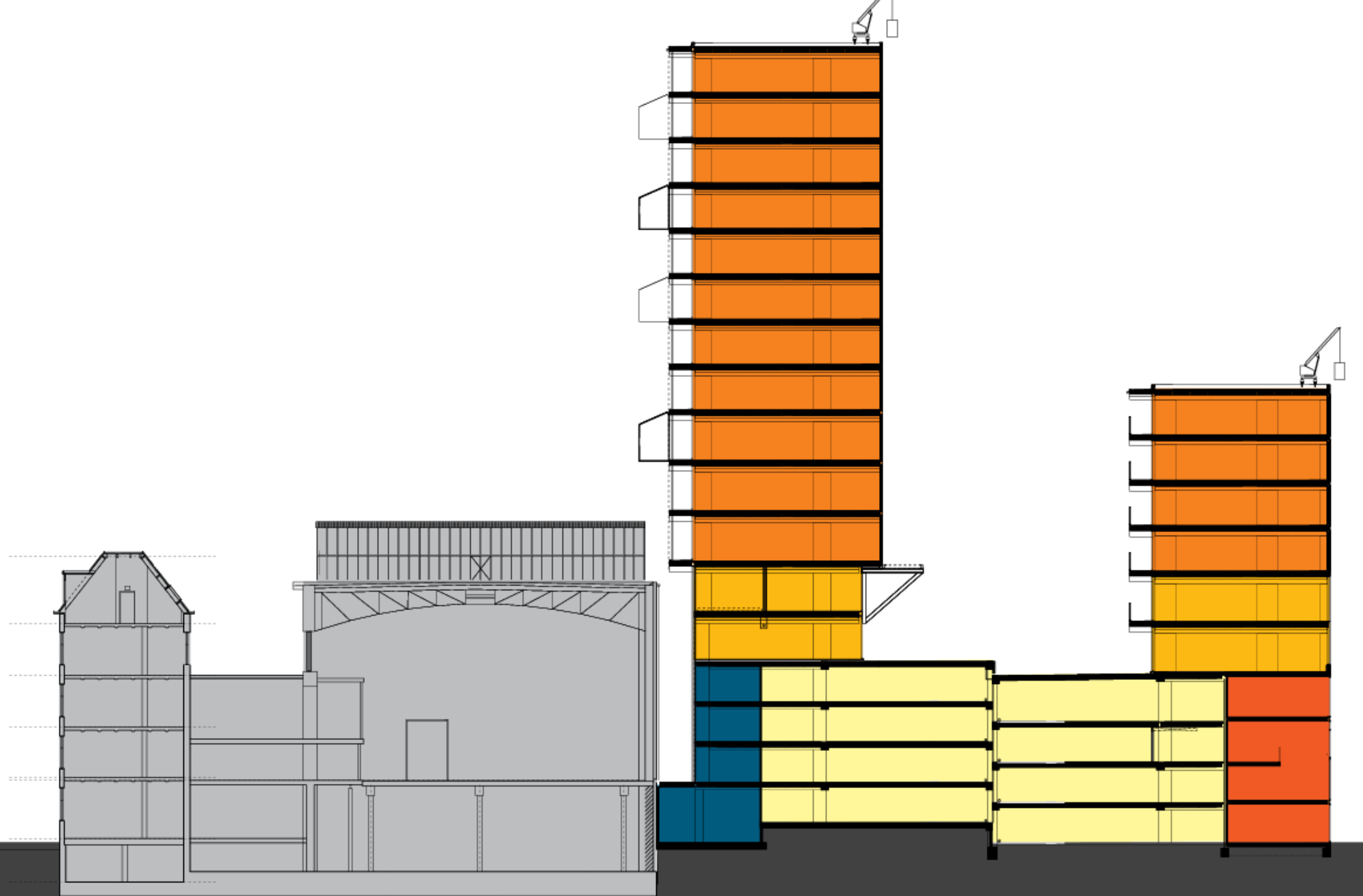


schematic view of divisions at completion



flexibility





Saeedsun.ir

section

